

SHAPE YOUR FUTURE

SHEBBEAR COLLEGE SIXTH FORM



SHEBBEAR
COLLEGE

WELCOME TO THE SIXTH FORM

At Shebbear College, our Sixth Form offers a unique experience that you won't find elsewhere. We have a history of excellent teaching and superb pastoral care, meaning that our students enjoy a personalised learning programme that is right for them and achieve their very best at the end of their time here. As well as academic achievement, our Sixth Formers have access to a huge range of enrichment, leadership and co-curricular opportunities, from learning life skills, to sports coaching for younger students, travelling on overseas expeditions and exchanges and more social events than you could ever wish for!

Our Sixth Formers leave Shebbear as enthusiastic, well-grounded and versatile young people who are excellently equipped to take their place in, and contribute to society. They are excellent role models for our younger pupils: they have fun, work hard and support one another. They are part of a close-knit community, in which everyone settles quickly and makes lifelong friends and where there is a shared desire to try their best and succeed in all they do.

Myself and the Sixth Form tutor team will support and guide you through your years of A-Level and/or BTEC study and enable you to develop the skills that are necessary in the modern world. Academically, students are mentored and tracked closely to ensure consistent progress is being made over the course of their time in the Sixth Form. Pastorally, we make sure that everyone feels safe and happy, giving them the right balance of support and independence - the perfect stepping stone to university or the workplace.

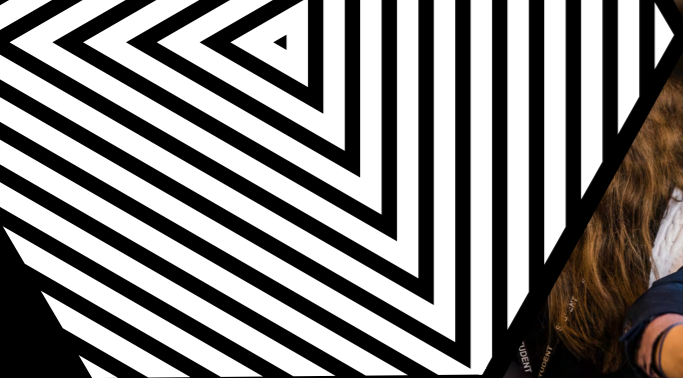
Through the pages of this brochure you will find overviews of the fantastic subjects we have to offer here, but the pages only tell half of the story; to experience a little of what makes Shebbear College Sixth Form so special, we recommend attending a taster day to give you a real insight into our exceptional community.

Please feel free to contact me if you have any questions. I am always happy to help.

Mrs Kate Burges
Head of Sixth Form

✉ kburgess@shebbearcollege.co.uk





WHY SHEBBEAR?

As you head into the Sixth Form, you will start to become more independent, taking the lead both in your studies and in your life beyond the classroom. These two years (or 18 months in reality) are a crucial time in your education and your choices at this time will play a big role in shaping your future.

At Shebbear College, our Sixth Form bridges the gap between the more structured learning environment that you have been used to at school, and the freedom and independence of university or the workplace. Described by our Sixth Formers as being like an extended family, we are small, supportive and friendly, meaning that we can create a tailored experience that works for YOU - focusing on your individual strengths and aspirations and helping you to achieve the very best that you can in all aspects of your life.



ACADEMIC CHALLENGE

Studying in the Sixth Form at Shebbear College is a fantastic opportunity to focus on the subjects for which you hold a real passion. You will develop a whole new working relationship with your teachers, who will support you every step of the way whilst placing an emphasis on independent study, enabling you to develop invaluable skills for life.

We offer 18 A-Level subjects as well as BTEC National Level 3 Qualifications in three subjects: Business, Performing Arts and Sport. All of our A-Level and BTEC subjects are on offer to all Sixth Form students each year with a free choice of combinations - so, for example, you may choose to study two A-Levels and a BTEC. If you are not sure whether A-Level or BTEC is right for you, just ask and we can talk this through with you!

Our class sizes are purposefully small and our Sixth Form tutor team and specialist subject teachers work very closely with each student, helping you to achieve your best and get to where you want to be.

Please note that the majority of our subjects require a minimum of four students for us to be able to run the course effectively.

HIGH ACHIEVERS' PATHWAY

Pupils aiming for Oxbridge, Medicine, Dentistry and Veterinary Science courses have access to our High Achievers' Pathway which offers personalised support with applications on to these courses through our Head of Horizons and links with the NHS and the RVC.

Students placed on the programme benefit from extensive opportunities within each faculty to stretch their academic development. These include personalised mentoring, enrichment opportunities and academic talks and lectures to further enhance their knowledge and develop their passion for their subjects beyond the constraints of the curriculum.

SHAPING YOUR FUTURE

Every year our pupils choose to study a broad range of courses at top universities including medicine, veterinary science, engineering, law, humanities, The Arts, fashion, economics and Languages. In the last five years, on average 95% of our Sixth Formers have gained a place at their first choice of university on the course that they have chosen.

Others go on to do foundation degrees, internships or apprenticeships and some take a gap year or go straight into the workplace.



OPPORTUNITY & ENRICHMENT

Alongside all things academic, you will have the chance to be involved in all areas of school life, from our extensive co-curricular offering, to overseas expeditions and trips, our Sports Exchange Programme, the chance to take on new responsibilities and the opportunity to participate in our Life Skills programme.

CO-CURRICULAR

In the Sixth Form you will be part of our 360@Sheb Co-Curricular programme, which focuses on developing the 'Whole You' through a wide range of co-curricular activities, both on and off campus. Aimed at building confidence, endurance, skill and enjoyment, the programme includes: the opportunity for off-site activities once a week (examples include horse riding, swimming, water sports, surfing and indoor tennis); a wide range of on-site clubs; a sport focused activities session for each year group; a performing arts activities session and an environmental education session each week. 360@Sheb is different to other schools, with activities being delivered during the day, as part of the school timetable, rather than being bolted on to the end of the day.

ADVENTURE

We are lucky to have Dartmoor, Exmoor and the beaches of North Cornwall and North Devon on our doorstep, a brilliant opportunity for outdoor learning and adventure. Enrichment activities on offer throughout the year include hiking, sailing, climbing, kayaking, rowing, surfing and mountain biking among many others and we are always looking for new ideas from our pupils!

Each year our Sixth Form students take part in the Ten Tors Challenge, hiking 45 or 55 miles over Dartmoor, and the Gold Duke of Edinburgh Award Scheme, which involves planning, training for and taking part in a three day exhibition. Both challenges promote teamwork and resilience - excellent skills for life.

LIFE SKILLS

In the Sixth Form you will take part in our Life Skills programme, covering topics such as student finance, mental health, decision making, healthy living and political engagement.



EXCHANGE PROGRAMME

We are lucky enough to work closely with other schools from across the world to provide reciprocal exchange opportunities for our Sixth Form pupils each year. We link with Canberra Grammar School and Marist College in Australia as well as Kingswood College in South Africa, providing a life changing experience for all those involved.

Our most recent exchange programme took place in Summer 2023, and pupils welcomed their exchange partners back to Shebbear in the autumn.

SPORTS TOUR

Sixth Form pupils have the opportunity to take part in our Sports Tour to various international destinations including Barbados & St Lucia, Sri Lanka, Dubai or South Africa. These tours run during the holidays for the school sports teams and provide pupils with an opportunity of a lifetime, combining training opportunities and matches against local sides with the chance to experience the local sights and culture. Our next Sports Tour is likely to take place in 2025.



CAMPS INTERNATIONAL

Our Sixth Formers have the amazing opportunity to go on a four week expedition with Camps International during the summer holidays. In summer 2022 a group travelled to Kenya, living and working alongside local people and getting involved in a range of sustainable projects, from community development to environmental conservation. Our next expedition will take place in summer 2024.



SIXTH FORM LIFE

As a Sixth Form student, you enjoy your own dress code (smart work wear). Sixth Formers are based in our modern Sixth Form Centre and are very much part of the school community, whilst enjoying a greater freedom within the school day. The Sixth Form Centre is an adult environment in which you can both develop your academic potential and relax with your friends. There are rooms for quiet individual study and group study, classrooms, meeting rooms, our Careers Office and a common room with a kitchen for that all important tea and toast!



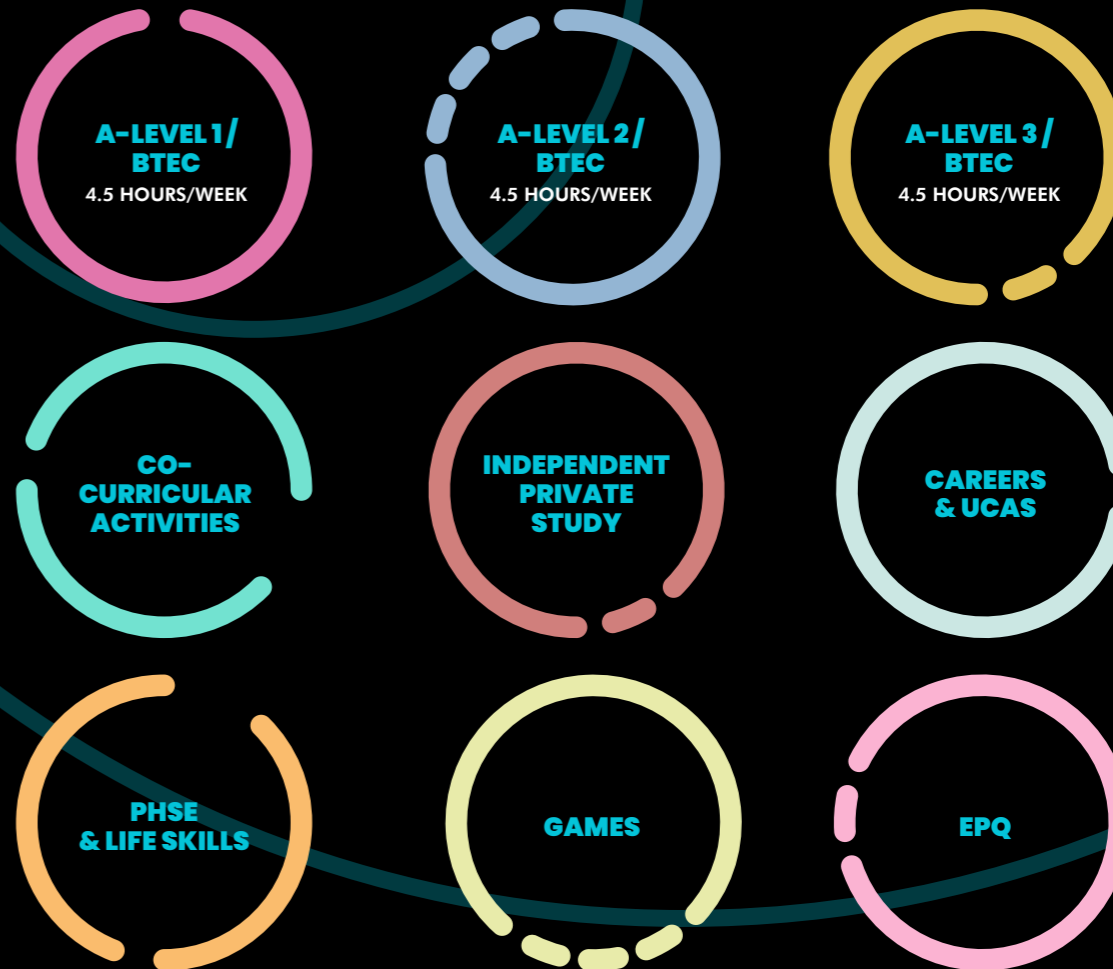
SOCIAL EVENTS

There is a busy calendar of events throughout the year for our Sixth Form students, so you will always have something to look forward to. From a traditional Ceilidh dance, to Pizza and Quiz nights, meals out, our famous Rounsefell black tie dinner and of course the much anticipated Sixth Form Pantomime!

SIXTH FORM SCHOLARSHIPS

We have a number of Sixth Form Scholarships available for talented internal and external candidates. We offer Awards for Music, Drama, Art, Sport and Academic Excellence. For further details, please contact our Registrar on 01409 282009 or admissions@shebbearcollege.co.uk.

WEEKLY STRUCTURE



HORIZONS

CAREERS AND GUIDANCE

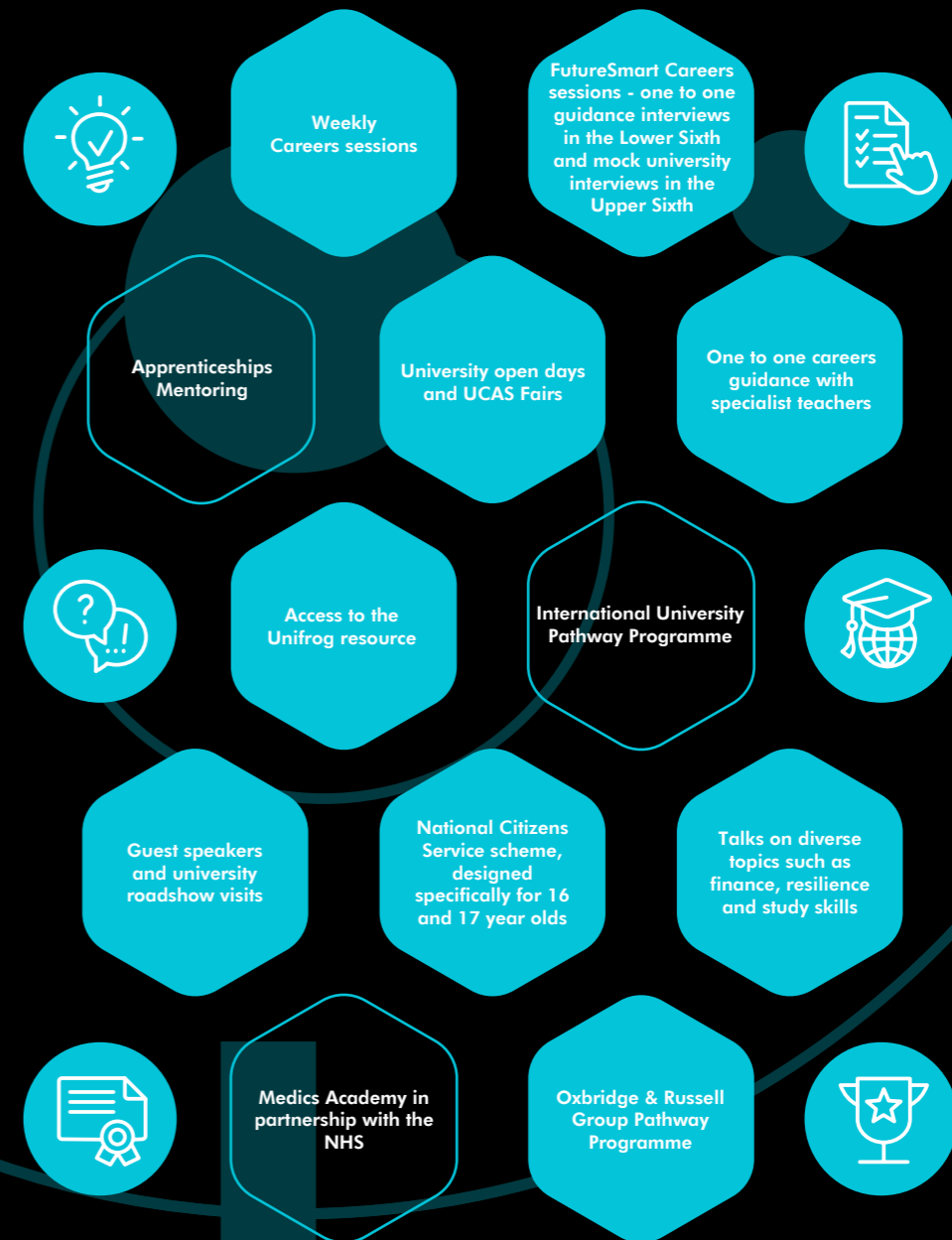
In the Sixth Form you will have the support of our excellent Horizons department. You will participate in regular tutorial sessions, covering topics such as study skills, student finance, gap year opportunities and C.V. writing and interviews, as well as regular debating sessions.

You will be encouraged to organise your own study time outside of lessons and take on responsibilities, developing the management and leadership skills needed to prepare for life at university and beyond.

We have a programme dedicated to university applications, which includes advice on writing personal statements, choosing courses and universities, roadshow visits from international universities and talks from outside specialist speakers.

Each student has individual guidance with their application, particularly their personal statement, from their tutor and from our Head of Horizons, Mrs Aliberti, who oversees each application personally.

There is also advice on apprenticeships and gap years for those who don't want to apply to university.



UNIVERSITY DESTINATIONS 2023

University Name	Course Placed
Cardiff University	Human Geography
Kent and Medway Medical School (KMMS)	Medicine
UCL	Applied Medical Sciences
University of Nottingham	Computer Science and Artificial Intelligence
Coventry University	Automotive Engineering
University of Winchester	Physiotherapy
King's College London	English Language and Linguistics
King's College London	Physics
University of Winchester	Law
Oxford Brookes University	Business and Finance
Oxford Brookes University	English and Journalism
Royal Agricultural University	Real Estate
University of Plymouth	Mechanical Engineering
University of South Wales	Theatre and Drama
Cardiff University	Journalism, Media and English Literature
University of Bristol	Veterinary Science

EXTENDED PROJECT QUALIFICATION (EPQ)

The Extended Project Qualification (EPQ) is an opportunity to complement your A-Levels by offering the chance for in-depth self-motivated research in any topic area. Over five terms you work towards the completion of a final product that could be a dissertation, an investigation, a performance or an artefact. The qualification is highly regarded, offers the opportunity to go well beyond A-Level in subject depth and encourages a cross-curricular approach allowing pupils to display drive and independence, both so important as an undergraduate at university.

The purpose of the EPQ is not to deliver a particular curriculum but to encourage the development of independent learners who possess a range of thinking and study skills. Our experienced staff offer expertise from a broad range of disciplines, and pupils are encouraged to collaborate with specialists in their chosen subject area from both inside and outside the school community.

What you will do in Lower Sixth:

- Tutorials with staff where tutors will offer guidance on a one-to-one or group basis
- Formulating a focused title or project brief
- Identifying project objectives and rationale
- Developing a clear project plan
- Introduction to primary and secondary sources, including peer-reviewed journals
- Assessing the credibility of source material (dissertation projects only)
- Formatting a project
- Academic referencing of sources and composing a bibliography

- Developing and demonstrating skills in analysis and synthesis
- Developing professional relationships with experts in the field

What you will do in Upper Sixth:

- Tutorials with staff where tutors will offer guidance on a one-to-one or group basis
- Writing a discussion section that includes arguments and counter-arguments (dissertation projects only)
- Evaluating your work
- Gaining experience in peer and self assessment
- Developing oral and visual presentation skills
- Present your project at the project showcase

Recent examples of extended projects by pupils at Shebbear College that demonstrate the wide range possibilities include:

- A military leader of the Ancient Rome period
- Bio-chemistry involved in development of cosmetic products such as shampoos
- The portrayal of female characters by Thomas Hardy
- Issues involved in the current NHS health provision crisis
- Performance and feasibility of commercial drone design
- Mental health within agriculture

ART & DESIGN



WHY SHOULD I CHOOSE ART & DESIGN?

Studying A-Level Art & Design is an exciting opportunity that will enable you to develop your observational, analytical, and imaginative skills. You will be able to work independently, exploring new ideas and developing your creativity. As well as looking at art history for inspiration, you will have the opportunity to engage with the modern world and seek out culturally diverse and contemporary artists. The course will enable you to experiment with a range of disciplines and

media, including: drawing, printmaking, textiles, painting, sculpture, mixed media, and photography. You will be fully supported in the subject areas that you choose and will be encouraged to use your own interests to shape the work that you do. We have a dedicated Sixth Form Art Studio where A-Level lessons take place. Each pupil has their own work area where they can leave work out and return to it; this space can also be used outside of lesson times. As part of the course, you will have the opportunity to visit Art Galleries, Studios and Museums, as well as attending workshops with artists and photographers. Ultimately, you will develop your own artistic identity, voice, and unique perspective through the development of your personal outcomes.

ENTRY REQUIREMENTS

Interest, curiosity, and passion for the subject are the most important qualities needed to take Art & Design at A-Level. If you have taken Art at GCSE, we would usually expect you to have gained a Grade 6 or above in the subject.

WHERE NEXT?

Art & Design is one of the fastest growing areas of study in the UK, with skills such as visual literacy and creative thinking being greatly valued by both universities and employers.

As well as routes into Art & Design degrees, the practical work, creative thinking, problem solving and communication skills that you will gain from this A-Level will equip you for a range of opportunities at university or in the world of work, including Animation, Architecture, Illustration, Fashion Design, Graphic Design, Interior Design, Engineering, Product Design, Creative Direction, Marketing and Media.

COURSE CONTENT

1. Component 1: Personal investigation

(coursework, 60% of A-Level)

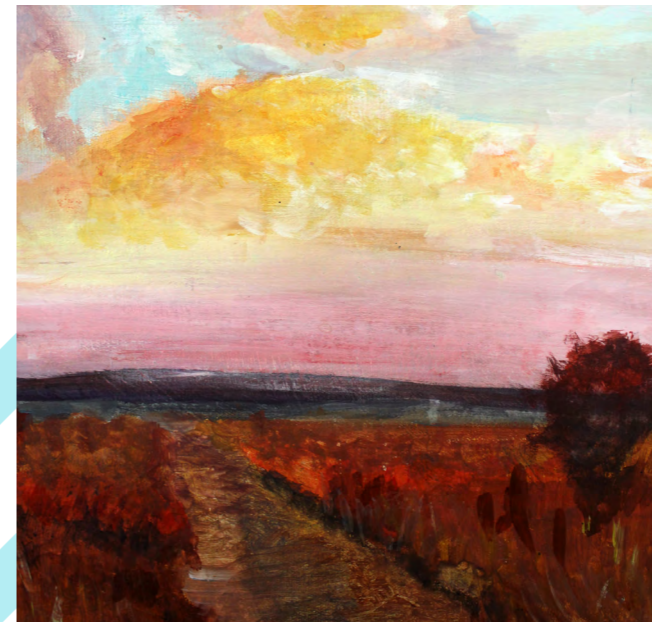
i) Practical Portfolio

This is a practical portfolio of your work. You will develop skills based on your own interests and will choose and develop your own theme. You may work in any media and final pieces can be paintings, drawings, mixed media, sculpture or photography. This portfolio can be presented in a variety of forms, for example sketchbooks, mounted sheets or illustrated written work, and there is no restriction on the scale of work produced.

ii) Related Study

This is a written study (guide 2000 – 3000 words) and will be closely related to the theme of your practical portfolio work. It will allow you to develop your analytical skills and enrich your understanding of the work of inspirational artists and movements.

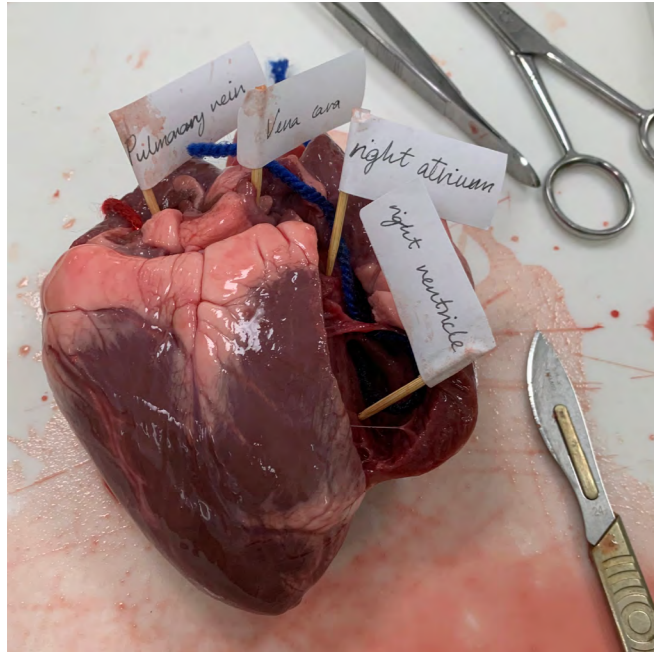
2. Component 2: Externally set task



(15 hr controlled assessment, 40% of A-Level)

This is a fifteen-hour controlled assessment (usually taking place in three 5 hour blocks). The task paper is released in February, giving you time to plan and prepare. You choose one theme to develop from the many choices on the task paper.

BIOLOGY



WHY SHOULD I CHOOSE BIOLOGY?

A-Level Biology is designed to engage and inspire pupils by showing how an understanding of many contemporary issues requires a grasp of fundamental biological ideas.

Studying Biology teaches us to ask questions, make observations, evaluate evidence and solve problems. Biologists learn how living things work, how they interact with one another, and how they evolve.

They may study cells under a microscope, insects in a rainforest, viruses that affect human beings, plants in a greenhouse or lions in the African grasslands. Biology increases our understanding about the natural world in which

we live and helps us address issues of personal well-being and worldwide concern, such as environmental depletion, threats to human health and maintaining viable and abundant food supplies.

ENTRY REQUIREMENTS

The qualification builds on the knowledge and skills that you gained in GCSE Combined Science or GCSE Biology. To take the A-Level, you should have at least a grade 6 in GCSE Biology or Combined Science as well as at least a grade 6 in GCSE Mathematics and English Language.

WHERE NEXT?

Other subjects that complement an A-Level in Biology include Chemistry, Physics, Maths, Psychology and Geography. A-Level Biology can lead to a range of exciting courses and careers including Medicine, Veterinary Medicine, Dentistry, Biochemistry, Neuroscience, Biomedical Sciences, Biotechnology, Conservation, Forensic Science, Genetics, Psychology, Physiotherapy and Sport Science.

COURSE CONTENT

Overarching topics

- Topic 1:** Biological Molecules
- Topic 2:** Cells, Viruses and Reproduction of Living Things
- Topic 3:** Classification and Biodiversity
- Topic 4:** Exchange and Transport

Specific topics

- Topic 5:** Energy for Biological Processes
- Topic 6:** Microbiology and Pathogens
- Topic 7:** Modern Genetics
- Topic 8:** Origins of Genetic Variation
- Topic 9:** Control Systems
- Topic 10:** Ecosystems

Assessment structure

The A-Level examination consists of three papers.

All papers may include multiple-choice, short open, open-response, calculations and extended writing questions.

Paper 1

(1 hr 45 mins exam, 30% of A-Level)

- Biological Molecules
- Cells, Viruses and Reproduction of Living Things
- Classification and Biodiversity
- Exchange and Transport
- Energy for Biological Processes
- Microbiology and Pathogens
- Modern Genetics

Paper 2

(1 hr 45 mins exam, 30% of A-Level)

- Biological Molecules
- Cells, Viruses and Reproduction of Living Things
- Classification and Biodiversity



- Exchange and Transport
- Origins of Genetic Variation
- Control Systems
- Ecosystems

Paper 3

(2 hrs 30 mins exam, 40% of A-Level)

This paper will include questions from the topics covered in Papers 1 and 2. It will include synoptic questions that may draw on two or more different topics.

Practical assessment

A-Level Biologists must show practical competency by completing 16 core practicals throughout the course.

Core practicals form part of the practical competency assessment which is internally assessed and externally moderated.

These practicals will enable pupils to use relevant apparatus and techniques to develop and demonstrate specific practical skills and competency during the two year course.

BUSINESS STUDIES



WHY SHOULD I CHOOSE BUSINESS STUDIES?

Business Studies A-Level is all about the workings of a business, looking at what makes a successful business and the challenges that businesses face. Pupils will investigate ways of solving these challenges as well as looking into the external environment in which businesses operate.

ENTRY REQUIREMENTS

There is no specific GCSE requirement for A-Level Business Studies. An interest in current affairs and a desire to understand how businesses work is important.

WHERE NEXT?

The Business Studies A-Level provides a good grounding in many subject areas with a breadth that enables pupils to go on to a range of degree courses and careers.

A Business Studies qualification is highly respected by universities and employers and you could go on to study:

- Business (there is a wide range of Business courses offered by Universities including specific industry related courses (hospitality, banking, tourism), usually with a one year placement in industry.)
- Marketing
- Public relations
- Sociology
- Geography
- Politics
- Law
- History

You could go directly into employment in Finance, Insurance or Business Management.

COURSE CONTENT

Topics covered include:

- Planning and Financing a Business
- Managing a Business
- Operations Management
- Marketing and the Competitive Environment
- Strategies for Success
- Managing Change
- Human Resource Management

- The Role of Stakeholders
- Motivation

Pupils studying A-Level Business Studies will investigate:

- What is Business?
- Management, leadership and decision making
- Decision making to improve marketing, financial, human resources and operational performance
- Analysing the strategic position of a business
- Choosing strategic direction
- Strategic methods: how to pursue strategies
- Managing strategic change

Pupils will explore business in a variety of contexts (e.g. large/small, UK focused/global, service/manufacturing) and consider:

- The importance of the context of business in relation to decision making
- The interrelated nature of business activities and how they affect competitiveness
- The competitive environment and the markets in which businesses operate
- The influences on functional decisions and plans including ethical and environmental issues
- The factors that might determine whether a decision is successful e.g. the quality of data and the degree of uncertainty
- How technology is changing the way decisions are made and how businesses operate and compete
- The impact on stakeholders of functional decisions and their response to such decisions
- The use of non-quantitative and quantitative data in decision making

Assessment – 100% Examination

The A-Level is examined at the end of a two year course – there is no coursework. There are 3 papers which are each two hours long.



Paper 1: Business 1
(2 hr exam, 33.3% of A-Level)

Paper 1 comprises three sections:

Section A has 15 multiple choice questions.

Section B has short answer questions.

Section C and D have two essay questions (choice of one from two).

Paper 2: Business 2
(2 hr exam, 33.3% of A-Level)

Paper 2 has three data response compulsory questions made up of three or four part questions.

Paper 3: Business 3
(2 hr exam, 33.3% of A-Level)

Paper 3 has one compulsory case study consisting of approximately six questions.

CHEMISTRY

WHY SHOULD I CHOOSE CHEMISTRY?

Successful Chemists are inquisitive about the world around them and possess analytical skills which allow them to interpret complex information. If you are curious about the world and like solving problems creatively, then you will enjoy A-Level Chemistry.

Chemistry A-Level is a mixture of practical and written work, developing an enjoyment and understanding of chemistry together with providing the skills needed to study science at higher levels.

ENTRY REQUIREMENTS

The qualification builds on the knowledge and skills that you gained in GCSE Combined Science or GCSE Chemistry. To take the A-Level, you should have at least a grade 6 in GCSE Chemistry or Combined Science as well as at least a grade 6 in GCSE Mathematics and English.

The ability to solve problems creatively is essential in Chemistry, as is a reflective and determined attitude to learning.

WHERE NEXT?

A-Level Chemistry is a very versatile qualification which is particularly prized by universities and employers for the development of transferrable skills it provides.

Traditionally, Chemistry has been seen as a vital entry qualification for university courses in the fields of Engineering, Life Sciences, Medicine, Dentistry, Veterinary Science and other Science-based courses.

Nowadays, an A-Level in Chemistry is in demand in many areas of study including Business, Law, English and Psychology.



COURSE CONTENT

Assessment structure

The A-Level examination consists of three papers.

All papers may include multiple-choice, short open, open-response, calculations and extended writing questions.

Paper 1: Advanced Inorganic and Physical Chemistry

(1 hr 45 mins exam, 30% of A-Level)

- Atomic Structure and the Periodic Table
- Bonding and Structure
- Redox I
- Inorganic Chemistry and the Periodic Table
- Formulae, Equations and Amounts of Substance
- Energetics I
- Equilibrium I
- Equilibrium II
- Acid-base Equilibria
- Energetics II
- Redox II
- Transition Metals

Paper 2: Advanced Organic and Physical Chemistry

(1 hr 45 mins exam, 30% of A-Level)

- Bonding and Structure
- Redox I
- Formulae, Equations and Amounts of Substance
- Organic Chemistry I
- Modern Analytical Techniques I
- Kinetics I
- Kinetics II
- Organic Chemistry II
- Organic Chemistry III
- Modern Analytical Techniques II



Paper 3: General and Practical Principles in Chemistry

(2 hrs 30 mins exam, 40% of A-Level)

This paper will include questions from the topics covered in Papers 1 and 2. It will include synoptic questions that may draw on two or more different topics.

Half of the questions in Paper 3 will focus on testing knowledge and understanding of practical skills and techniques.

Practical assessment

A-Level Chemists must show practical competency by completing a minimum of 12 core practicals throughout the course.

Practical work will be assessed through numerous experiments leading to the awarding of a 'Certificate of Practical Competence'.

COMPUTER SCIENCE



WHY SHOULD I CHOOSE COMPUTER SCIENCE?

Computer Science is a practical subject where pupils can apply the academic principles learned in the classroom to real-world systems. It's an intensely creative subject that combines invention and excitement, and, above all else, will be relevant to the modern and changing world of computing.

If you are someone who likes to be at the forefront of all things technological then this is the course for you. Computer Science at Shebbear College will develop your problem-solving skills and teach you how to design innovative solutions.

ENTRY REQUIREMENTS

There is no required GCSE grade for A-Level Computer Science, although it is an advantage to have studied the subject at GCSE. An interest in the subject is essential.

WHERE NEXT?

There is very little in our world that does not involve an aspect of Computer Science, and an A-Level in the subject can take you wherever you choose, including courses in Computer Science, Software Engineering, Computer Games Production, Information Systems, Forensic Computing, Computer Technology and Networking and Electronics.

Careers directly related to Computer Science include a Business Analyst, Database Administrator, Games Developer, Information Systems Manager, IT Consultant, Multimedia Programmer, SEO Specialist, Systems Analyst, Systems Developer, UX Analyst, Web Designer and Web Developer.

Other careers linked to Computer Science include a Digital Copywriter, IT Sales Professional, IT Trainer, Network Engineer and Product Manager.

COURSE CONTENT

A-Level Computer Science encourages pupils to develop an understanding of, and the ability to apply, its fundamental principles and concepts, including data representation, abstraction, decomposition, logic and algorithms. In addition to these skills, the course also helps pupils to develop their analytical skills in computational terms through practical experience of problem solving and writing programmes.

Assessment structure

There are two examinations which count for 80% and one Programming Project, worth 20%.

Paper 1: Computer Systems

(2 hr 30 mins exam, 40% of A-Level)

- The characteristics of contemporary processors, input, output and storage devices
- Software and software development
- Exchanging data
- Data types, data structures and algorithms
- Legal, moral, cultural and ethical issues

Paper 2: Algorithms and Programming

(2 hr 30 mins exam, 40% of A-Level)

SECTION A

Traditional questions concerning computational thinking:

- Elements of computational thinking
- Programming and problem solving
- Pattern recognition, abstraction and decomposition
- Algorithm design and efficiency
- Standard algorithms



SECTION B

A scenario/task (for example an algorithm or a text page-based task) which will involve problem solving.

Programming Project

(Project, 20% of A-Level)

Pupils will be expected to analyse, design, develop, test, evaluate and document a program written in a suitable programming language. The underlying approach to the project is to apply the principles of computational thinking to a practical coding problem.

DRAMA & THEATRE



WHY SHOULD I CHOOSE DRAMA & THEATRE?

A-Level Drama and Theatre at Shebbear College will provide you with the opportunity to develop your practical performance skills, to think creatively, to work closely as a team, to solve problems, to argue coherently and to use initiative and imagination.

You will learn through experience, seeing theatre and making theatre for yourself and can choose an area of focus as either a performer, a designer (lighting, sound, set, costume, puppets), a director or a combination of these.

As part of the course, you will have the opportunity to go on a range of exciting Theatre trips as well as attend practitioner workshops with a variety of visiting theatre companies.

ENTRY REQUIREMENTS

There are no specific entry requirements, although it is an advantage to have studied GCSE Drama and to have some co-curricular experience. However a passion for performance and a desire to learn are the most important factors.



WHERE NEXT?

An A-Level in Drama and Theatre is well respected and regarded by universities and employers. The opportunities are endless but you may wish to go on to study or work in Theatre, Film, Media, Psychology, Politics, Law or Public Relations.

COURSE CONTENT

Assessment structure

The subject content for A-Level Drama and Theatre is divided into three components:

1. Drama and Theatre (written exam)
2. Creating Original Drama (practical)
3. Making Theatre (practical)

Each component is designed to allow pupils to demonstrate their creativity and imagination in interpreting set texts and apply independent thinking as they evaluate a live theatre production.

Component 1: Drama & Theatre

(3 hr open book exam, 40% of A-Level)

What's assessed?

- Knowledge and understanding of Drama and Theatre
- Study of two set plays, one chosen from List A, one chosen from List B
- Analysis and evaluation of the work of live theatre makers

Component 2: Creating Original Drama

(Practical Assessment, 30% of A-Level)

What's assessed?

- Process of creating devised drama through a working notebook
- Performance of devised drama (pupils may contribute as performer, designer or director)

The devised piece must be influenced by the work and methodologies of one prescribed practitioner.

Component 3: Making Theatre

(Practical Assessment, 30% of A-Level)

What's assessed?

- Practical exploration and interpretation of three extracts each taken from a different play
- Methodology of a prescribed practitioner must be applied to the third extract, which will be performed as a final assessed piece (pupils may contribute as performer, designer or director)
- Reflective report analysing and evaluating theatrical interpretation of all three extracts

ECONOMICS



WHY SHOULD I CHOOSE ECONOMICS?

A-Level Economics aims to give an insight into key issues in the news affecting everyday life. Our goal is to allow you to understand the forces driving things like social policy, mergers and acquisitions, international trade, the price of oil, exchange rates and the level of unemployment in an economy.

Economics at Shebbear College will teach you how to make sense of the world around you. The course covers a wide range of topics, including 'supply and demand', the role of the Government, different market systems, efficiency, game theory, economic growth and the impact of a globalised economy.

In this course, economic theory is applied to 'real world' current affairs questions including the Bank of England's response to Covid-19, the UK economy, Brexit, financial crises and globalization.

ENTRY REQUIREMENTS

It would be useful to have a grade 6 or above in GCSE Mathematics but an interest in current affairs is the most important requirement for this subject.

WHERE NEXT?

An A-Level in Economics gives you access to a wide choice of careers and is highly respected by universities and employers.

Degree subjects related to Economics include Business Studies, Economics, Geography, Politics, History and Mathematics.

You could go directly into employment. Opportunities are very wide but Economics is particularly valued for careers in Business Management and Finance.

COURSE CONTENT

A-Level Economics will test skills in writing, data handling, problem solving and analysis. The course is structured into four themes and consists of three externally examined papers.

Theme 1: Introduction to markets and market failure

This theme focuses on microeconomic concepts. Pupils will develop an understanding of:

- nature of economics
- how markets work
- market failure
- government intervention

Theme 2: The UK Economy - performance and policies

This theme focuses on macroeconomic concepts. Pupils will develop an understanding of:

- measures of economic performance



- aggregate demand
- aggregate supply
- national income
- economic growth
- macroeconomic objectives and policy

Theme 3: Business behaviour and the labour market

This theme develops the microeconomic concepts introduced in Theme 1 and focuses on business economics.

Pupils will develop an understanding of:

- business growth
- business objectives
- revenues, costs and profits

- market structures
- labour market
- government intervention

Theme 4: A Global Perspective

This theme develops the macroeconomic concepts introduced in Theme 2 and applies these concepts in a global context. Pupils will develop an understanding of:

- international economics
- poverty and inequality
- emerging and developing economies
- the financial sector
- role of the state in the macroeconomy

Assessment – 100% Examination

The A-Level is examined at the end of a two year course. There are 3 papers.

Paper 1: Markets and Business Behaviour

(2 hr exam, 33.3% of A-Level)

Each question is set in a context, drawing on topics from across Themes 1 and 3. The assessment comprises 7 questions.

Paper 2: The National and Global Economy

(2 hr exam, 33.3% of A-Level)

Questions will be drawn from Themes 2 and 4. The assessment comprises 7 questions.

Paper 3: Microeconomics and Macroeconomics

(2 hr exam, 33.3% of A-Level)

Each question is set in a context, drawing on topics from across Themes 1, 2, 3 and 4. The assessment comprises 2 questions.

ENGLISH LITERATURE

WHY SHOULD I CHOOSE ENGLISH LITERATURE?

This is an exciting and popular course that allows pupils to explore some of the greatest literature written in the English language in the last five hundred years. You will engage with texts in their contexts, evaluate how meanings and responses may have changed over time, and develop your own unique analytical style on the way.

This course suits anyone with an active mind and something to say. Expect dynamic conversation, intellectual stimulation and literary revelation. We can't wait to get started!

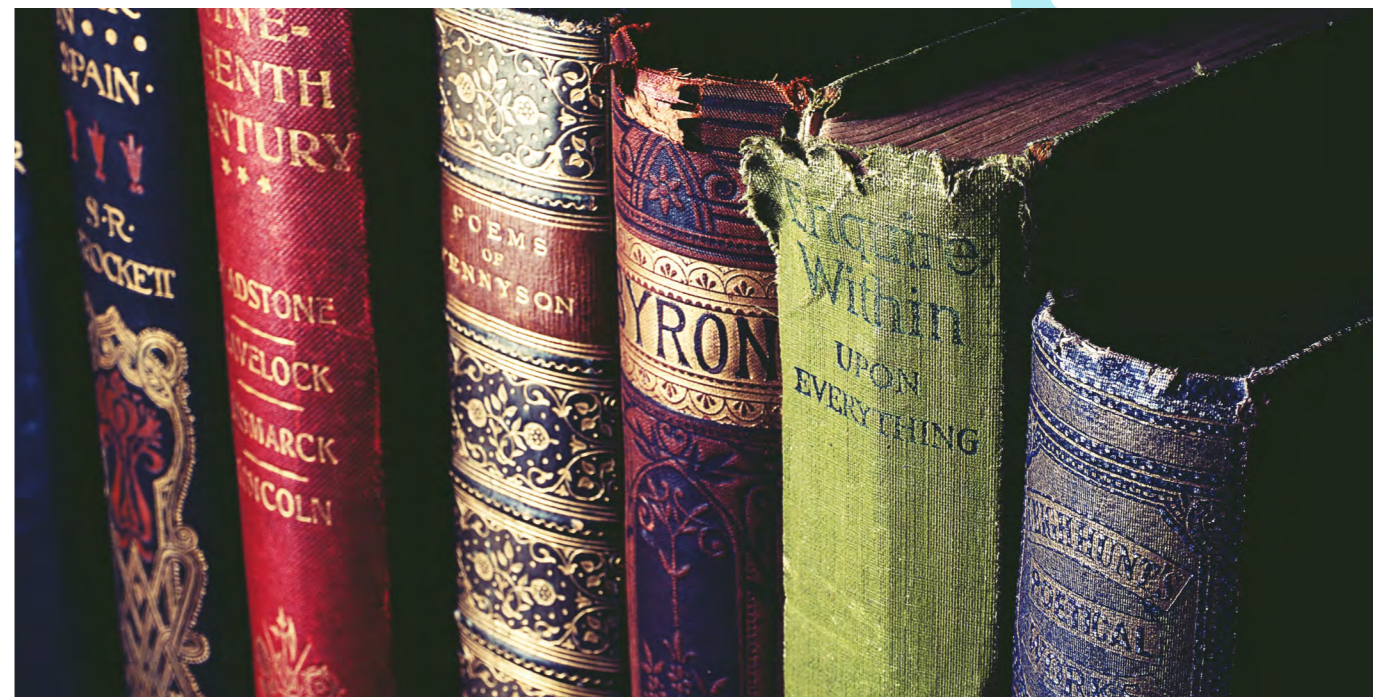
ENTRY REQUIREMENTS

The standard entry requirement for A-Level English Literature is GCSE Grade 6 or above in both English Language and English Literature. Enthusiasm and reading are also important, as is a willingness to take an active part in discussions.

WHERE NEXT?

English Literature is a highly respected A-Level. You are taught to think analytically, consider different interpretations and listen and respond to others sensitively. One of the most important skills you will learn is how to write coherently and critically – invaluable in higher education and the world of employment.

English Literature A-Level not only supports other essay-based subjects, but the skills gained throughout the course also provide the perfect link to the Sciences and the Performing Arts. An A-Level in English Literature can take you anywhere!



COURSE CONTENT

Assessment Structure

Two written papers, in Drama, Prose and Poetry, are worth 80% of the total grade.

In the Upper Sixth, pupils work towards their coursework submission, worth 20% of the overall grade.

Paper 1 - Love through the ages (3 hr exam, 40% of A-Level)

This paper focuses on texts through time, but with one unifying theme: love. For this exam, pupils will read Othello, study a range of poetry to prepare for an unseen task, and compare the seminal text Jane Eyre with poetry in an anthology. We consider love in all its forms, platonic, familial and romantic, and from the grandly passionate to the forlornly unrequited.

Paper 2 - Texts in shared contexts (2 hour 30 mins exam, 40% of A-Level)

This paper focuses on drama, prose and poetry from the last fifty years, and asks pupils to consider what factors contribute to identity. Here, exam texts include A Streetcar Named Desire, The Handmaid's Tale, and Feminine Gospels. We consider what it means to be alive in this ever changing world, and consequently tackle current affairs in an accessible and meaningful way.

Non-exam assessment: Independent critical study: texts across time (Coursework, 20% of A-Level)

With help and guidance from teachers, pupils will choose two texts to write about, so that they can explore an area that is of particular interest to them. One text must be pre-1900, but the topic depends entirely on the pupil's own passions.

GEOGRAPHY



WHY SHOULD I CHOOSE GEOGRAPHY?

If you enjoy finding out about how our world works and how we interact with our environment, then this is the course for you.

Geography is, in the broadest sense, an education for life and for living. It provides an ideal framework for relating other fields of knowledge, and it is not surprising that those trained as geographers often contribute substantially to the applied management of resources and environments.

You will take part in independent research, develop written, numerical and investigative skills, travel and do practical work outdoors.

Fieldwork is a key part of Geography; as part of the course, you will have the opportunity to visit a range of locations within the UK and abroad.

//

The study of geography is about more than just memorizing places on a map. It's about understanding the complexity of our world, appreciating the diversity of cultures that exists across continents. And in the end, it's about using all that knowledge to help bridge divides and bring people together.

//

Barack Obama.

ENTRY REQUIREMENTS

You do not need to have studied the subject at GCSE in order to take A-Level Geography but it may be an advantage. Ideally you would have Grade 6 or above in GCSE Mathematics and English.



WHERE NEXT?

Geography as a subject combines well with Biology, Business Studies, Economics, History and Mathematics. It is identified by the Russell Group as one of eight facilitating subjects which provide the best grounding for pursuing a wide range of career and higher education opportunities and is one of the subjects with the highest rates of graduate employability. It is highly valued by employers for its combination of knowledge, integration, and competence at training in the key skills.

A-Level Geography supports a wide range of courses and careers including Accountancy, Cartography, Architecture, Geology, Medicine, Environmental Management & Consultancy, Geographical Information Systems, Housing & Property Management, Journalism, Law, Surveying, Teaching and Tourism.

COURSE CONTENT

Geography is the integrated study of the Earth's landscapes, peoples, places and environments. It is, quite simply, about the world in which we live. It is unique in bridging the social sciences (human geography - cultures, societies and economies), and the earth sciences (physical geography - landscapes and environmental processes). Geography puts this understanding of social and physical processes within the essential context of places and regions - recognising the great differences in cultures, political systems, economies, landscapes and environments across the world and the links between them.

There are four areas of study:

1. Dynamic Landscapes

- Tectonic Processes and Hazards
- Landscape Systems, Processes and Change

2. Dynamic Places

- Globalisation
- Shaping Places

3. Physical Systems and Sustainability

- The Water Cycle and Water Insecurity
- The Carbon Cycle and Energy Security

4. Human Systems and Geopolitics

- Superpowers
- Global Development and Connections

Assessment Structure

Three externally-assessed written examination papers are worth 80% of the total grade.

Coursework is worth 20% of the total grade.



Paper 1
(2 hr 15 mins exam, 30% of A-Level)

Section A - Tectonic Processes and Hazards

Section B - Landscape Systems, Processes and Change (Glaciated Landscapes and Change or Coastal Landscapes and Change)

Section C - The Water Cycle and Water Insecurity and the Carbon Cycle and Energy Security

Paper 2
(2hr 15 mins written exam, 30% of A-Level)

Section A - Globalisation and Superpowers

Section B - Shaping Places. Questions on either Regenerating Places or Diverse Places

Section C - Global Development and Connections.

Questions on either Health, Human Rights and Intervention, or Migration, Identity and Sovereignty.

Paper 3
(2hr 15 mins written exam, 20% of A-Level)

An externally-assessed written examination comprising three sections. A resource booklet will contain information about the geographical issue covered in the exam. Sections A, B and C all draw synoptically on knowledge and understanding from compulsory content drawn from different parts of the course.

All papers may include short open, open response and resource-linked questions.

Paper 4
(Coursework, 20% of A-Level)

This coursework is an investigation of between 3000 and 4000 words, internally assessed and externally moderated.

HISTORY

WHY SHOULD I CHOOSE HISTORY?

History is a popular A-Level choice at Shebbear College, appealing to those with a love of the subject and a desire to find out more about why the world is like it is today.

It is not only engaging and enjoyable but it is also recognised by the Russell Group as one of their key facilitating subjects for accessing the top universities.

Through our History A-Level, you will learn the invaluable skills of analysis, argument, self-discipline, empathy, intellectual independence and communication.

History can be successfully combined with any other subject, from the more creative to the Sciences.

ENTRY REQUIREMENTS

You do not need to have studied the subject at GCSE in order to take A-level History but it may be an advantage. A Grade 6 in GCSE English is desired and a passion for the subject is essential.

WHERE NEXT?

The skills learnt through History are at a premium in universities and are highly prized in the commercial, industrial and professional worlds.

Career paths followed by those with A-Level History include Law, Government and Politics, Accountancy, Journalism, Television and Radio, Advertising, Sales and Marketing, PR, Archaeology, Archive, Museum or Library work, Antiques & Auctioneering, Teaching, the Armed Forces, the Police... the list is endless.



COURSE CONTENT

Assessment Structure

The A level history course consists of three taught modules and one independent study. Paper 1 and Paper 3 are each assessed in a 135 minute written exam and are each worth 30% of the total mark. Paper 2 is assessed in a 90 minute exam worth 20% of the total mark. The remaining 20% of the total mark is based on the 'Non-Examined Assessment,' or independent study. Exams are sat at the end of Year 2.

Paper 1. (Breadth Study)**Britain, 1625-1701: Conflict, Revolution and Settlement.**

- Politics, religion, economics, and social change in the turbulent seventeenth century.
- The English Civil War
- Stuart Restoration
- The Glorious Revolution of 1688

Paper 2. (Depth Study)**Russia in Revolution, 1894-1924**

- The road to revolution
- The October Revolution of 1917
- The establishment of a Bolshevik state

Paper 3. (Breadth Study with Aspects of Depth)**Rebellion and Disorder Under the Tudors, 1485-1603**

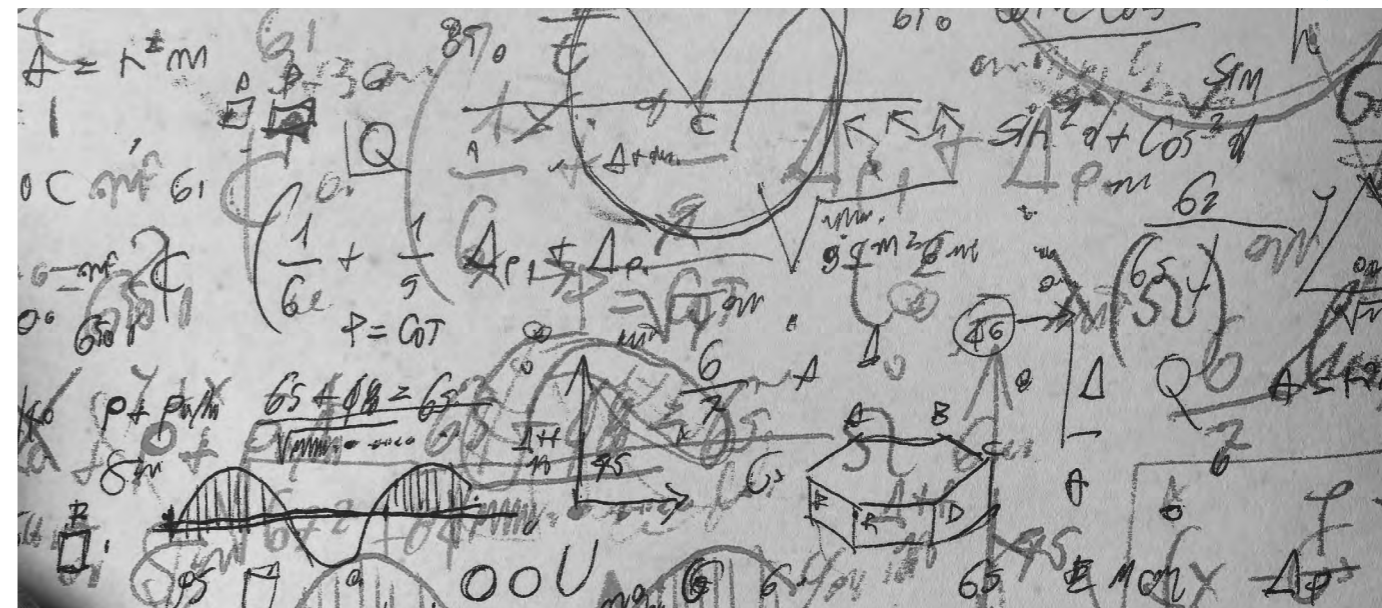
- Maintaining Royal control
- Opposition to religious and economic policies
- War in Ireland
- Rebellion in the West of England

Non-Examined Assessment**Coursework**

- 3,000-4,000 word extended research project
- Pupils can choose almost any aspect of history that interests them, provided it does not duplicate the examined topics.
- Pupils look at a major debate in history and consider the different ways in which history comes to be written.



MATHEMATICS & FURTHER MATHEMATICS

**WHY SHOULD I CHOOSE MATHS?**

Mathematics is everywhere! It plays a vital role in many aspects of the modern world and in areas of our working life such as Business, Economics, Engineering, Management, Medicine and Computer Science.

At Shebbear College the A-Level Mathematics courses are designed to develop your mathematical knowledge and understanding so that you are able to apply logical reasoning and mathematical arguments to solve problems in the real world. These invaluable skills can be transferred to a wide range of contexts and situations.

Maths is a popular subject at A-Level and our teachers will always find the time to support pupils if they have any specific questions on any topic. The lessons are not only varied, but

also challenging, enabling pupils to get the most out of these courses.

Mathematics and Further Mathematics will count as two separate A-Levels.

ENTRY REQUIREMENTS

You will need to have a grade 6 or above in GCSE Mathematics in order to study the subject at A-Level.

For Further Mathematics, you will normally be expected to have gained a grade 7, 8 or 9 in GCSE Maths. You must be studying A-Level Mathematics.

WHERE NEXT?

Mathematics is the most highly sought-after A-Level by universities. Nearly every degree course will accept it and most science and economics courses will expect it.

Mathematics and Further Maths A-Levels are the perfect grounding for a degree course in Mathematics, Engineering, Physics or Natural Science.

MATHEMATICS COURSE CONTENT

Assessment Structure

We offer AS and A-Level Mathematics at Shebbear College.

Both qualifications have 100% prescribed content (no optional content).

There is no coursework; this subject is 100% examination.
AS Level Mathematics

The AS Mathematics course consists of two externally-examined papers.

Paper 1: Pure Mathematics (2 hr exam, 62.5% of A-Level)

- Topic 1 – Proof
- Topic 2 – Algebra and functions
- Topic 3 – Coordinate geometry in the (x,y) plane
- Topic 4 – Sequences and series
- Topic 5 – Trigonometry
- Topic 6 – Exponentials and logarithms
- Topic 7 – Differentiation
- Topic 8 – Integration
- Topic 9 – Vectors

Paper 2: Statistics and Mechanics (1 hr 15 mins exam, 37.5% of A-Level)

Section A: Statistics

- Topic 1 – Statistical sampling
- Topic 2 – Data presentation and interpretation
- Topic 3 – Probability
- Topic 4 – Statistical distributions
- Topic 5 – Statistical hypothesis testing

Section B: Mechanics

- Topic 6 – Quantities and units in mechanics
- Topic 7 – Kinematics
- Topic 8 – Forces and Newton's laws

A-Level Mathematics

A-Level Mathematics consists of three externally examined papers.

Paper 1: Pure Mathematics 1 (2 hr exam, 33.33% of A-Level)

Paper 2: Pure Mathematics 2 (2 hr exam, 33.33% of A-Level)

Paper 1 and Paper 2 may contain questions on any topic from the pure mathematics content.

- Topic 1 – Proof
- Topic 2 – Algebra and functions
- Topic 3 – Coordinate geometry in the (x,y) plane
- Topic 4 – Sequences and series
- Topic 5 – Trigonometry
- Topic 6 – Exponentials and logarithms
- Topic 7 – Differentiation

- Topic 8 – Integration
- Topic 9 – Numerical Methods
- Topic 10 – Vectors

Paper 3: Statistics and Mechanics (2 hr exam, 33.33% of A-Level)

The assessment comprises two sections: Section A – Statistics and Section B – Mechanics.

Section A: Statistics

- Topic 1 – Statistical sampling
- Topic 2 – Data presentation and interpretation
- Topic 3 – Probability
- Topic 4 – Statistical distributions
- Topic 5 – Statistical hypothesis testing

Section B: Mechanics

- Topic 6 – Quantities and units in mechanics
- Topic 7 – Kinematics
- Topic 8 – Forces and Newton's laws
- Topic 9 – Moments

FURTHER MATHEMATICS COURSE CONTENT

Assessment Structure

A-Level Further Mathematics consists of four externally examined papers.

Paper 1: Core Pure Mathematics 1 (1 hr 30 mins exam, 25% of A-Level)

Paper 2: Core Pure Mathematics 2 (1 hr 30 mins exam, 25% of A-Level)

Paper 1 and Paper 2 may contain questions on any topics from the Pure Mathematics content.

- Proof
- Complex numbers
- Matrices
- Further algebra and functions
- Further calculus
- Further vectors
- Polar coordinates
- Hyperbolic functions
- Differential equations

Paper 3: Further Mathematics Option 1 (1 hr 30 mins exam, 25% of A-Level)

Students take one of the following four options:

- A:** Further Pure Mathematics 1
- B:** Further Statistics 1
- C:** Further Mechanics 1
- D:** Decision Mathematics 1

Paper 4: Further Mathematics Option 2 (1 hr 30 mins exam, 25% of A-Level)

Students take one of the following seven options:

- A:** Further Pure Mathematics 2
- B:** Further Statistics 1
- C:** Further Mechanics 1
- D:** Decision Mathematics 1
- E:** Further Statistics 2
- F:** Further Mechanics 2
- G:** Decision Mathematics 2

FRENCH



WHY SHOULD I CHOOSE A MODERN FOREIGN LANGUAGE?

The study of a Modern Language at A-Level aims to develop the capacity to converse fluently and write competently on contemporary and cultural issues. At Shebbear College, French is offered at A-Level.

Research on the use of languages in the modern world highlights the need for this country to encourage the study of languages other than English to very high standards of proficiency.

International trade, continued European links and the effects of globalisation will increase the demand for skilled linguists in an ever changing variety of roles and careers.

You will develop the necessary language skills to be able to engage fully in international business or in the world of international relations and diplomacy.

ENTRY REQUIREMENTS

You will need French GCSE at grade 6 or above or bi-lingual capability to study the subject at A-Level.

WHERE NEXT?

An A-Level qualification in French combines well with any other course, but particularly helps enhance your skills in English, History, Geography, Music and Philosophy.

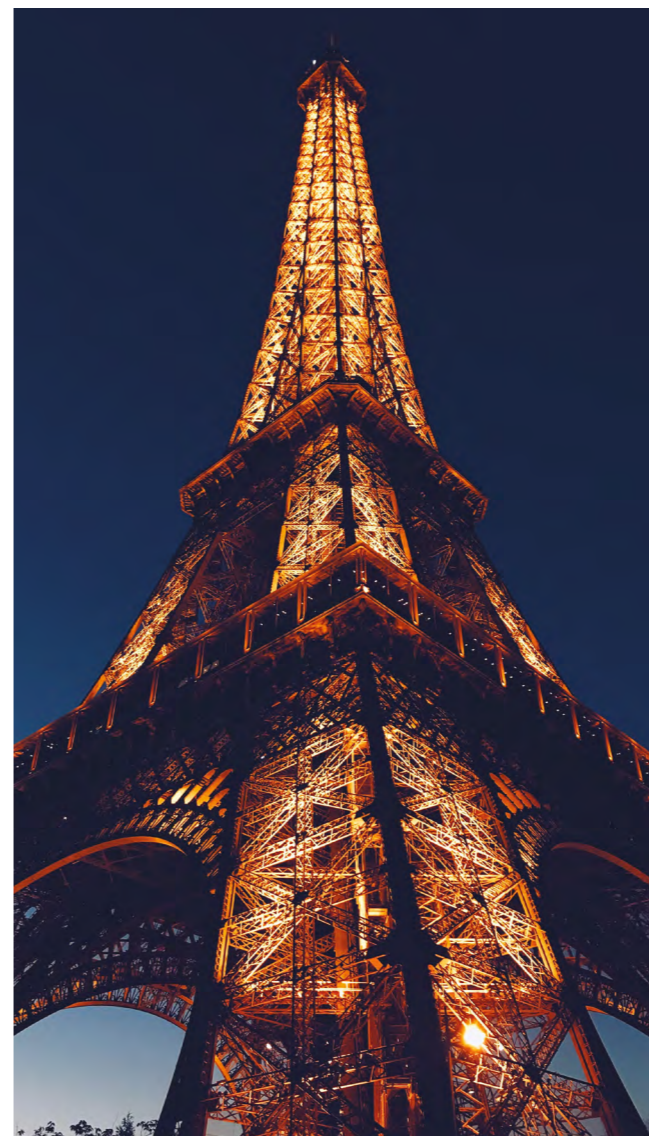
This academic course provides solid preparation for Further Education courses or careers in Law, Politics, Business, Teaching, Journalism & Media, Tourism or any profession with an international dimension.

A-Level Languages help you to develop excellent, adaptable interpersonal skills and are amongst the most valued subjects for entry to many universities.

COURSE CONTENT

Moving away from GCSE topics you will learn to discuss issues ranging from reality TV to the effects of globalisation. You will develop the skills necessary to sustain arguments and present a personal research project. You will broaden your knowledge and understanding of modern society and its problems and study specific issues which affect the countries in which the language is spoken.

The course adds a cultural dimension to your knowledge as we study the works of famous film directors and authors, again aiming to develop critical analysis skills and the ability to discuss ideas. Learn about the people, the places, the politics.



Assessment Structure

Paper 1: Listening, reading and writing
(2 hrs 30 mins exam, 50% of A-Level)

- Aspects of French-speaking society: current trends
- Artistic culture in the French-speaking world
- Aspects of political life in the French-speaking world
- Multiculturalism
- Grammar
- Translation into English; a passage of minimum 100 words.
- Translation into French; a passage of minimum 100 words.

Paper 2: Writing

2 hrs exam, 20% of A-Level)

Either one question in French on a set text from a choice of two questions and one question in French on a set film from a choice of two questions or two questions in French on set texts from a choice of two questions on each text.

Paper 3: Speaking

(21-23 mins oral exam, 30% of A-Level)

Individual research project on one of four sub-themes:

- Aspects of French-speaking society: current trends
- Aspects of French-speaking society: current issues
- Artistic culture in the French-speaking world
- Aspects of political life in the French-speaking world

MUSIC

Exam Board Edexcel A-Level



Our dedicated Music Centre is superbly equipped with the latest facilities including a specialist keyboard suite, teaching classrooms, numerous practice rooms, performance areas, a sound-proofed recording studio and a suite of computers with editing software. We also have an excellent selection of instruments including Steinway pianos and keyboards.

You will also be encouraged to take a more active role in music across the school, getting involved in performances and concerts.

ENTRY REQUIREMENTS

To take A-Level Music you should have a minimum of 5 GCSEs at grade 5 or above. It would be helpful to have at least a grade 6 in English Language or a Humanities subject (Religious Studies, History or Geography) and a grade 7 in Music. You should also have a performance standard of at least Grade 5.

We welcome motivated pupils with a passion for music and a commitment to the subject.

WHERE NEXT?

The subject complements a wide range of subject combinations in the arts, sciences, mathematics and social sciences.

If you are looking to pursue a career specifically in the performing arts industry, then you will certainly benefit from taking A-Level music. This is an extremely balanced course which has lots of transferable skills to other creative careers. All universities and conservatoires accept and welcome students with a qualification in this subject, onto a variety of courses. It is widely studied at A-Level to support career choices such as Law, Media, Medicine, Journalism, Economics, Commerce and Management.

COURSE CONTENT

The A Level is 100% externally assessed, and consists of one

written paper and two non-examined assessment components.

Component 1: Performing (Performance, 30% of A-Level)

This consists of a public performance of one or more pieces, performed as a recital with a minimum of eight minutes performing time.

Component 2: Composing (Composition, 30% of A-Level)

This consists of two compositions, one set to a brief set by the exam board and the other either free composition or also to a brief which lasts for a minimum of 4 minutes. The total time for compositions must exceed 6 minutes.

Component 3: Listening (2 hr exam, 40% of A-Level)

This paper comprises two sections.

Section A:

- Knowledge and understanding of musical elements, contexts and language.
- Application of knowledge through the context of six areas of study, each with three set works:

1. Vocal Music

- J. S. Bach, Cantata, Ein feste Burg
- Vaughan Williams - On Wenlock Edge

2. Instrumental Music

- Clara Wieck-Schumann - Piano Trio in G minor, Op. 17 movement 1
- Berlioz - Symphonie Fantastique Movement 1

3. New Directions

- Kaija Saariaho - Petals for Violoncello and Live Electronics
- Stravinsky - The Rite of Spring

4. Music for Film

- Danny Elfman - Batman Returns Rachel
- Bernard Herrmann - Psycho

5. Popular Music and Jazz

- Courtney Pine - Back in the Day
- Kate Bush - Hounds of love
- Beatles - Revolver

6. Fusions

- Debussy - 'Estampes' Nos. 1 and 2 Familia
- Anoushka Shankar - Breathing Under Water

Section B:

Extended response: Two essay questions based on the areas of study and music in a wider context.

PHYSICAL EDUCATION



WHY SHOULD I CHOOSE PHYSICAL EDUCATION?

A-Level Physical Education at Shebbear College will allow you to play to your strengths and gain dynamic theoretical and practical skills for further education or work.

The course will equip you with both a depth and breadth of knowledge, understanding and skills relating to scientific, socio-cultural and practical aspects of Physical Education.

In a world that is increasingly aware of the role that physical activity plays as part of a balanced, active and healthy lifestyle, employers look favourably on individuals who have a depth and breadth of knowledge of physical activity and who demonstrate an understanding of its importance in coping with the demands of modern day life.

ENTRY REQUIREMENTS

There are no specific requirements needed to take A-Level PE but you will need to have an interest in PE and Sport with some ability in effective performance or coaching in one or more sports.

WHERE NEXT?

Physical Education is a subject which provides many employment opportunities and graduates in this field have a wide range of options.

The A-Level course can lead to a university degree in Biomedical Sciences, Medicine, Physiology, Physiotherapy, Psychology, Biology, Outdoor Education, Leisure and Tourism or Sport Management among many others.

PE will provide an excellent foundation for careers in the Sport and Leisure industry, Military, Civil Service, Education, Coaching, Sports Psychology and Physiotherapy.

COURSE CONTENT

A-Level PE consists of two written examinations and a non-examination assessment (NEA), with practical performance and application of theory to practice.

Paper 1: Factors affecting participation in physical activity and sport

(2 hr written examination, 35% of A-Level)

Multiple choice, short answer and extended writing questions on the following three sections:

Section A: Applied anatomy and physiology

Section B: Skill acquisition



Section C: Sport and society

Paper 2: Factors affecting optimal performance in physical activity and sport

(2 hr written examination, 35% of A-Level)

Multiple choice, short answer and extended writing questions on the following three sections:

Section A: Exercise physiology and biomechanics

Section B: Sport psychology

Section C: Sport and society and technology in sport

Non-exam assessment: Practical performance in physical activity and sport

(NEA, 30% of A-Level)

The NEA assesses practical performance in physical activity and sport. It requires pupils to develop their ability and aptitude in physical activity, demonstrating the following appropriate skills and techniques:

- Perform a range of skills and techniques in physical activity and sport.
- Make decisions, implement strategies, tactics and/or compositional ideas, and apply knowledge and understanding of rules and regulations while performing physical activity and sport.
- Apply knowledge and understanding of theories, concepts, principles and methods to physical activity and performance
- Evaluate performance in physical activity and sport, applying relevant knowledge and understanding.

There are two aspects to the NEA:

1. Performance assessment (practical performance)
2. Performance analysis assessment (analysis and evaluation)

PHYSICS

WHY SHOULD I CHOOSE PHYSICS?

Studying Physics is about exploring the world around us and using that knowledge to solve problems. Physicists embrace the challenge of understanding the nature of the Universe from the incredibly small, in the form of subatomic particles that make up the fundamental building blocks of all matter, to the incredibly large, in the form of star formation and the origins of the Universe.

The course is presented through a large amount of practical work, allowing you to learn through your own experiences. This practical aspect will build confidence and assist with problem solving skills. The theory is put into direct context in a variety of applications, ranging from the mechanics involved on a sports playing field to the understanding of relativity through muons dying in our atmosphere.

A-Level Physicists at Shebbear College are taught in a small groups in our modern, well-equipped laboratories.

ENTRY REQUIREMENTS

To take A-Level Physics, you would usually be required to have a minimum of a grade 6 in Combined Science or Physics GCSE.

Numeracy and Literacy skills are essential for all science A-Levels so a grade 6 or higher at GCSE Maths and GCSE English are also required.

WHERE NEXT?

Physics is a qualification which is highly regarded by universities and employers. It is a crucial subject for anyone wishing to pursue a career in Applied Science, Technology or any aspect of Engineering and of course those who wish to study physics at University, as well as providing a good foundation for many other courses.



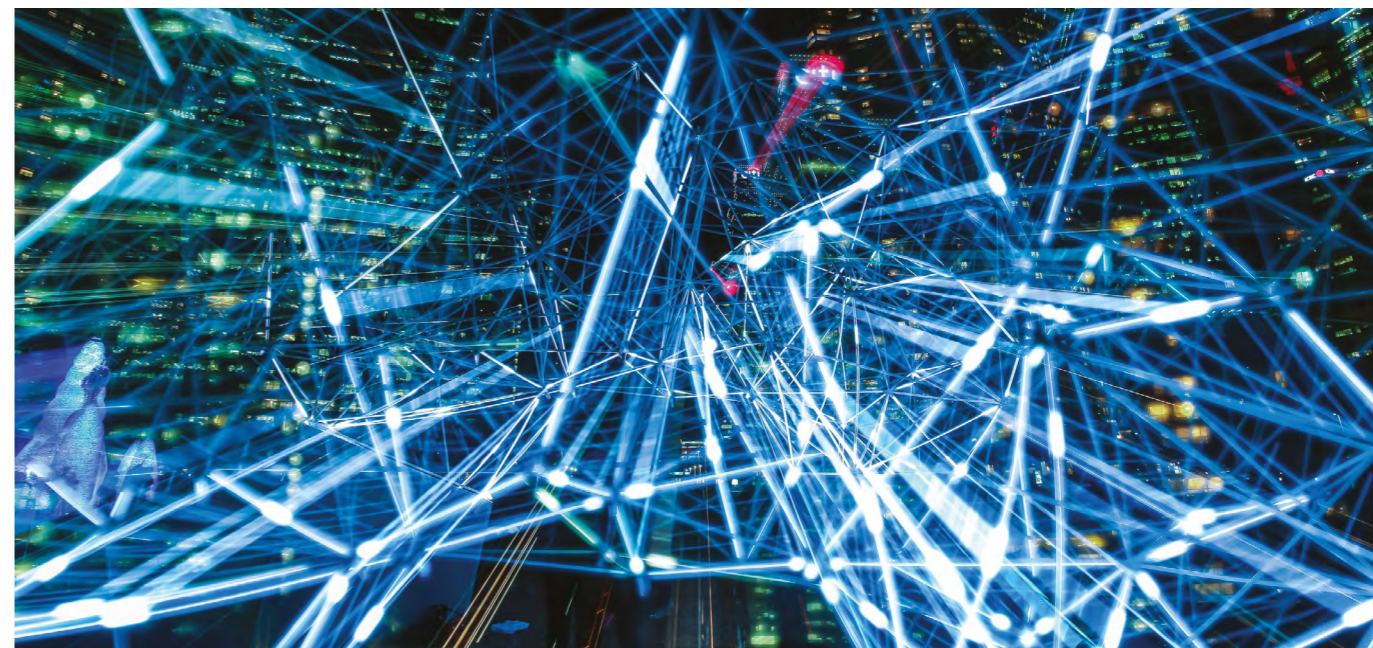
This course supports careers in Research, Industry, Teaching, IT, Medicine, Finance, Marketing, Business and Management among many more.

COURSE CONTENT

A-Level Physics consists of three externally examined papers and the Science Practical Endorsement.

Paper 1 - Advanced Physics 1
(1 hr 45 mins exam, 30% of A-Level)

- Mechanics
- Electric Circuits
- Further Mechanics
- Electric and Magnetic Fields
- Nuclear and Particle Physics



Paper 2 - Advanced Physics 2
(1 hr 45 mins exam, 30% of A-Level)

- Materials
- Waves and Particle Nature of Light
- Thermodynamics
- Space
- Nuclear Radiation
- Gravitational Fields
- Oscillations

Paper 3 - General and Practical Principles in Physics
(2hrs 30 mins exam, 40% of A-Level)

Questions in this paper may draw on any of the topics in this specification. The paper will include synoptic questions that may draw on two or more different topics. For example, a question could ask students to compare electric fields with gravitational fields. The paper will include questions that assess

conceptual and theoretical understanding of experimental methods (indirect practical skills) that will draw on students' experiences of the core practicals (as detailed below).

Science Practical Endorsement
(Practical work to support examinations)

Pupils will also be assessed for a separate qualification known as the Practical Endorsement. This is internally assessed and externally moderated by Pearson Edexcel. The assessment of practical skills is a compulsory requirement of the course of study for A-Level physics. It will appear on all pupils' certificates as a separately reported result, alongside the overall grade for the qualification.

Pupils must show practical competency by completing a series of practicals throughout the course. They will be given opportunities to use relevant apparatus and techniques to develop and demonstrate specific practical skills throughout the two years.

PSYCHOLOGY



WHERE NEXT?

Taking an A-Level in Psychology will give you a good grounding in the subject and will help to decide whether you would like to continue to study the subject at University and even become a professional psychologist. If you do go into this area, you can work in research, in the healthcare system (as therapists or clinical psychologists), in business (as occupational psychologists) or in the Prison system (as forensic psychologists). Psychology is also useful in many other careers because it develops a number of transferable skills which are useful in many jobs and professions.

COURSE CONTENT

Paper 1 - Introductory Topics in Psychology

Topics covered include:

- **Social influence**
What makes us go along with the crowd, even against our better judgement? Under what conditions will we forget our morals in order to obey the orders of a destructive authority?
- **Memory**
How is memory organised? What causes us to remember some things and forget others? Can our memories actually be trusted?
- **Attachment**
What factors determine the quality of the bond between babies and their caregivers? What are the long term effects of lacking an early attachment? How do early relationships determine the course of our adult relationships?
- **Psychopathology**
Is there any such thing as "normal"? How can we apply Psychological theories to explain and treat "abnormal" behaviour such as phobias, depression and OCD?

WHY SHOULD I CHOOSE PSYCHOLOGY?

Psychology is the study of people, the mind and behaviour. It is a popular subject with students because it has a big impact on all areas of life, including education, health, the economy, industry and crime. If you are interested in finding out why people behave the way they do or how the brain works then psychology is definitely for you.

ENTRY REQUIREMENTS

There is no specific GCSE requirement for A-Level Psychology but a good grounding in Science and English Literature or Language is advised.

- **Approaches in Psychology**
How has the nature of Psychology changed over time from Freud's early theories, to the science it has become today?
- **Research methods**
How do Psychologists conduct their research, from generating a new hypothesis to using statistics to reveal whether it has been supported?

Paper 2: Psychology in Context

Topics covered include:

Biopsychology

- The divisions of the nervous system
- The structure and function of sensory, relay and motor neurons. The process of synaptic transmission.
- The function of the endocrine system: glands and hormones.
- The fight or flight response including the role of adrenaline.

Psychopathology

- Definitions of abnormality
- The behavioural, emotional and cognitive characteristics of phobias, depression and obsessive-compulsive disorder (OCD).
- The behavioural approach to explaining and treating phobias: the two-process model
- The cognitive approach to explaining and treating depression
- The biological approach to explaining and treating OCD

Research methods

Students should demonstrate knowledge and understanding of the following research methods, scientific processes and techniques of data handling and analysis, be familiar with their use and be aware of their strengths and limitations:

- Experimental method.
- Observational techniques.

- Self-report techniques. Questionnaires; interviews
- Correlations.

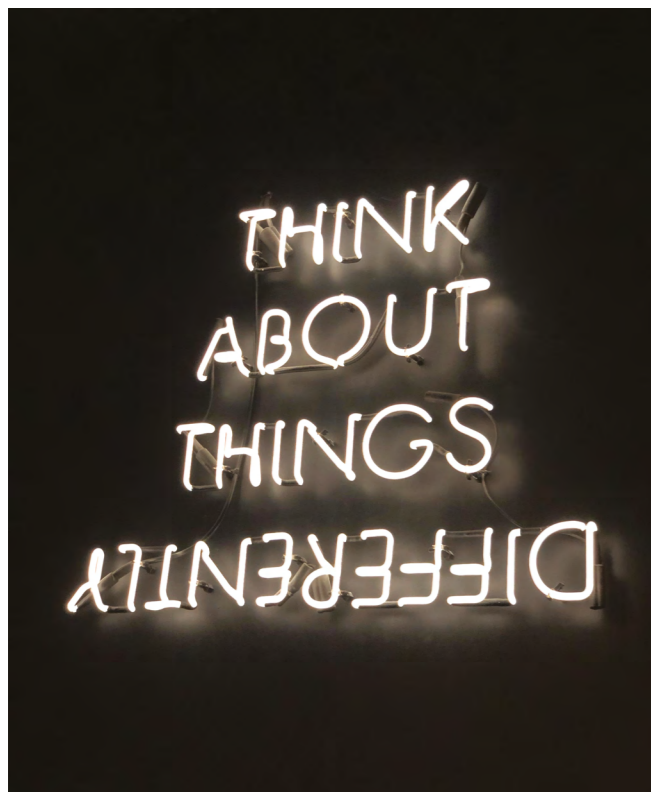
Scientific processes

- Aims
- Hypotheses
- Sampling
- Pilot studies and the aims of piloting.
- Experimental designs
- Observational design
- Questionnaire construction
- Variables
- Control
- Demand characteristics and investigator effects.
- Ethics
- The role of peer review in the scientific process.
- The implications of psychological research for the economy.

Data handling and analysis

- Quantitative and qualitative data
- Primary and secondary data
- Descriptive statistics
- Presentation and display of quantitative data: graphs, tables, scattergrams, bar charts.
- Distributions: normal and skewed distributions
- Introduction to statistical testing; the sign test.

RELIGIOUS STUDIES, PHILOSOPHY & ETHICS



WHY SHOULD I CHOOSE RELIGIOUS STUDIES, PHILOSOPHY & ETHICS?

Do you enjoy debating and arguing philosophical issues, challenging popular ideas or giving your point of view?

Do you want an A-Level that will stretch your mind, introduce you to great thinkers and give you a qualification respected throughout higher education?

Then this subject is for you!

An A-Level in Religious Studies, Philosophy & Ethics builds on the knowledge, understanding and skills established at GCSE. You will be introduced to a more advanced, complex approach to Religious Studies, and will develop a deeper understanding of the beliefs, teachings and philosophy they study.

This course gives you the opportunity to explore major philosophical questions in the history of Western and Eastern Philosophy. It is a subject that asks meaningful questions about the nature of the world and humanity's place within it:

- Who am I?
- Why am I here?
- How should we all live together?
- Is there life after death?

This course is for anyone who is interested in religion, philosophy and ethics. If you have an enquiring mind, are receptive to new ideas and enjoy asking fundamental questions about important issues, then this is the right subject for you.

This course is suitable for students of any or no faith.

ENTRY REQUIREMENTS

We welcome pupils who have a passion for learning, for being challenged and for thinking. You must also be committed and willing to read widely.

WHERE NEXT?

The subject complements a wide range of subject combinations from the arts and social sciences to the sciences and mathematics.

All universities accept and welcome students with a qualification in this area onto a variety of courses. It is widely studied at A-Level to support careers in Law, Medicine, Journalism, Economics and Commerce Management.

Philosophy (noun)

1. the study of the fundamental nature of knowledge, reality, and existence, especially when considered as an academic discipline.
2. a theory or attitude that acts as a guiding principle for behaviour.

COURSE CONTENT

We study three components; philosophy of religion, religion and ethics and developments in religious thought.

There is a written examination for each component.

1st Component: Philosophy of Religion (2 hr exam, 33.3% of A-Level)

We study philosophical issues and questions raised by religion and belief. These include arguments regarding the existence or non-existence of God, the nature and influence of religious experience and the problems of evil and suffering. We will also explore philosophical language and thought through significant concepts and the works of key thinkers such as Plato, Aquinas and Hume, illustrated in issues or debates in the philosophy of religion. Topics include the difficulties of humans using our limited knowledge and language to talk about 'God', the meaning of 'free-will' when God is omnipotent, and the challenge of the problem of evil to belief.

2nd Component: Religion and Ethics (2 hr exam, 33.3% of A-Level)

This is characterised both by a study of ethical language and thought through significant concepts and the works of key thinkers such as Kant and Singer, illustrated in issues or debates in religion and ethics, and also by the application of



ethical theory to issues of importance. For example are actions justified by their consequences, or are some moral acts 'right' regardless of consequences? We will study contrasting ethical theories and key ethical concepts (e.g. what is meant by 'conscience'), as well as developments in the way these ideas are applied to significant issues such as the ethics of business and of sex and sexuality.

3rd Component: Developments in Religious Thought (2 hr exam, 33.3% of A-Level)

This provides a fascinating opportunity for the study of beliefs and issues in Christianity. This will include exploration of religious beliefs, values and teachings, sources of wisdom and authority and practices that shape and express religious identity. This includes Christian understandings of human nature and the afterlife, ways of conceiving of God and of the person of Jesus (e.g. as the Son of God and as the Messiah), Christian moral principles and the teachings and practice of Dietrich Bonhoeffer, issues around religion and society including pluralism, gender, secularism and science.

BUSINESS



WHY SHOULD I CHOOSE BUSINESS BTEC?

We all interact with businesses every day - whether we are customers, or employees. Businesses are integral to the society we live in, but they are all different and as such have different needs. Studying business will allow you to respond to the challenges of any business whether as an entrepreneur starting up a new business or a manager of a large corporate firm. This course will develop your transferable business skills,

analysing the business environment, working with other people and presenting complex business ideas to others.

You will learn real, practical skills for the business world. These include making presentations, completing group tasks, interpreting financial data, producing business documents and responding to tough business decisions.



ENTRY REQUIREMENTS

There are no specific entry requirements for this course, apart from a keen interest in business.

WHERE NEXT?

The qualification carries UCAS points and is recognised by higher education providers as contributing to meeting admission requirements for many courses if taken alongside other qualifications as part of a two year programme of learning. It will support entry to many higher education courses, depending on the other qualifications learners have taken. The course is designed to replicate the Business working environment, giving you a broad understanding of business, developing skills, knowledge and understanding, applying learning in a practical and realistic way and develop personal skills through independent learning skills.

COURSE CONTENT

The course is made up of three mandatory units and one optional unit.

You will be assessed through a combination of an exam, externally set and marked work and internally assessed coursework.

Mandatory Units:

- Business environments
- Finance
- Marketing

Optional Units:

- Human resources
- Accounting
- Marketing
- Law

PERFORMING ARTS



WHY SHOULD I CHOOSE PERFORMING ARTS?

The BTEC in Performing Arts will provide you with the fantastic opportunity to explore the subject in a practical and creative way, developing invaluable skills, both theatrical and transferable, to expand your horizons.

In addition to fostering critical and creative skills, Performing Arts also increases confidence and leadership skills along with training in team work.

At Shebbear College the BTEC will specialise in Acting and Drama and we will explore this in a range of ways including the study of different play texts and practitioners, responding to direction and creating original devised performances. You will develop your understanding of performance and study a variety of theatre styles.

As part of the course, you will have the opportunity to go on a range of exciting Theatre trips as well as attend practitioner workshops with a variety of visiting theatre companies.

The course is equivalent to one A-Level and can be studied alongside a combination of other subjects – A-Level or BTEC.

ENTRY REQUIREMENTS

There are no specific entry requirements but the course will suit pupils who prefer the practical, hands-on approach to studies and who have an interest in all aspects of a performance.

WHERE NEXT?

BTEC Performing Arts opens a variety of pathways, beyond just careers in theatre. You have a wide range of routes at university, as well as developing skills relevant in the wider world of work.

As well as studying Performing Arts, students would be well equipped to follow degree courses in Drama, English, Journalism, Media Studies, Stage-Management and Arts Management.

//

The only way to do great work is to love what you do. If you haven't found it yet, keep looking. Don't settle.

//

Steve Jobs

COURSE CONTENT

We follow the BTEC Level 3 Performing Arts National Extended Certificate at Shebbear College and specialise in Acting and Drama.

The two year BTEC Extended Certificate, completed in the Upper Sixth, is recognised as equivalent to one A-Level.

COURSE STRUCTURE

The course is made up of four units. Three of these are mandatory units and one is optional.

You will be assessed through a combination of externally

assessed performances and work and internally assessed coursework.

Mandatory Units

- Investigating Practitioners' Work
- Developing Skills and Techniques for Live Performance
- Group Performance Workshop

Optional Units

You can choose one of the following optional units:

- Interpreting Classical Text for Performance
- Acting Styles
- Developing the Voice for Performance
- Improvisation
- Movement in Performance

Skills Gained

This course provides transferable knowledge and skills that prepare pupils for progression to university. The transferable skills that universities value include:

- the ability to learn independently
- the ability to research actively and methodically
- the ability to give presentations and be active group members.

BTEC learners can also benefit from opportunities for deep learning where they are able to make connections among units and select areas of interest for detailed study including:

- reading technical texts
- effective writing
- analytical skills
- creative development
- preparation for assessment methods used in a degree.

SPORT



WHY SHOULD I CHOOSE SPORT?

Are you passionate about sport? Want to develop advanced skills and knowledge in a range of adventure sports? Have hands-on practical experience based upon real life scenarios? Then BTEC Sport is for you!

This is a vocationally-related qualification that takes an engaging, practical and inspiring approach to learning and assessment. It is industry-relevant, geared to key sector requirements and very popular with pupils who are suited to a broad range of learning styles and abilities.

The course is equivalent to one A-Level and can be studied alongside a combination of other subjects – A-Level or BTEC.

ENTRY REQUIREMENTS

We would recommend that you have a grade 5 or above in GCSE PE in order to study for the BTEC in Sport. You must be an enthusiastic sports performer and have a genuine interest in sports coaching, health & fitness.



WHERE NEXT?

This course is valued by employers and higher education institutions and provides a good foundation for sports related degrees, teaching and outdoor education related degrees.

BTEC Sport could lead you to a career as a Sports Teacher or Coach, Outdoor Instructor, Nutritionist, Physiotherapist or Personal Trainer as well as careers in Leisure, Retail, Industry, Science and Technology.

COURSE CONTENT

We currently run the BTEC Level 3 National Extended Certificate in Sport at Shebbear College (equivalent to one A-Level).

Where there is demand, we are also able to offer the Level 3 National Certificate in Sport (equivalent to half an A-Level), the Diploma (equivalent to 2 A-Levels) or the Extended Diploma (equivalent to 3 A-Levels).

EXTENDED CERTIFICATE COURSE STRUCTURE

This course consists of four units.

- Anatomy and Physiology

Explores how the skeletal, muscular, cardiovascular, respiratory and energy systems function. Assessed in a 90 minute written exam which is marked externally.

→

Explores client screening, lifestyle assessment and fitness training methods to improve health & well-being. Assessed in a written task which is set and marked externally.

→

Explores the knowledge and skills required for different career paths in the sports industry. Internally assessed coursework.

→

Develops an understanding of different sports through exploring and using skills, techniques and tactics required in individual or team sports and reviewing your own performance to inform future development.



"When I joined Shebbear my confidence was dented and I wasn't the person I am now. Since I've been here, my personality and individual talents have been nurtured and my confidence has grown hugely. I've also had lots of opportunities to try new things. I am so grateful for the academic support I have received whilst I have been at this school, which I will take with me to university and beyond."

Bella



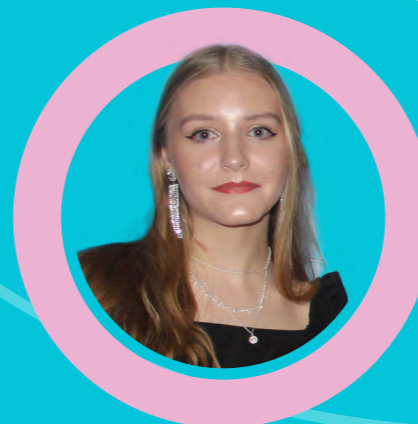
"I've had a great time at Shebbear since I started in Year 9. The teachers have always been very supportive and push each student to do their best, both inside and outside of the classroom. The small classes mean that there is a very personal focus, which has really helped me to fulfil my potential. Every student is able to be their own person, while also being guided through big decisions, from choosing A-Levels to deciding which university is right for them."

Niall



"For me, Sixth Form at Shebbear is about perseverance and resilience. It acts as a crucial stepping stone in your life and prepares you for whatever journey awaits. Whether that be a degree at uni or a gap year abroad. Most importantly, it is about the lifelong friends you make, those who will help you through your darkest hour, as the strong community bond that we have in the Sixth Form is really special. And of course it is also about having a lot of toast and coffee at the same time! "

Roy



"I've been here since I was 3 - my whole life! So I wanted to go somewhere different for Sixth Form and give myself a bit more independence. I joined College but when I got there it was just so overwhelming - there were thousands of people just in Lower 6th and huge class sizes with not much support. I realised it wasn't for me so I came back to Shebbear and I have no regrets whatsoever. I get so much support - in some of my classes there are only a handful of people and the environment in the Sixth Form is so nice - it feels really different to the rest of the school and I definitely have more independence and freedom."

Amelia



Shebbear College, Shebbear, Devon EX21 5HJ

www.shebbearcollege.co.uk
admissions@shebbearcollege.co.uk
01409 282009

Shebbear College is a member of the Methodist Independent Schools Trust (MIST).
Registered Charity No. 1142794
Registered Company No. 07649422